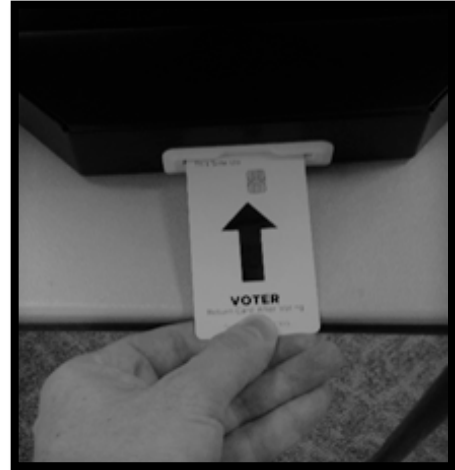
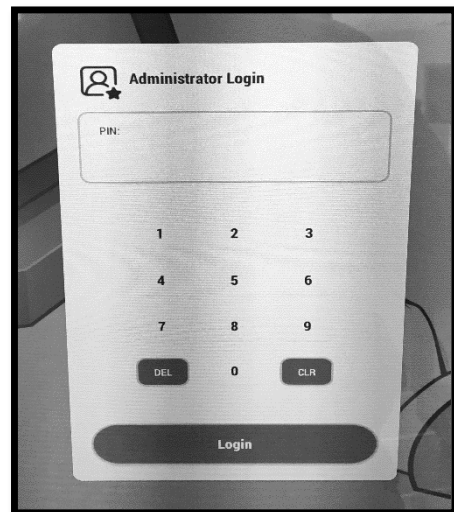


## Open the Polls and Test the Printer

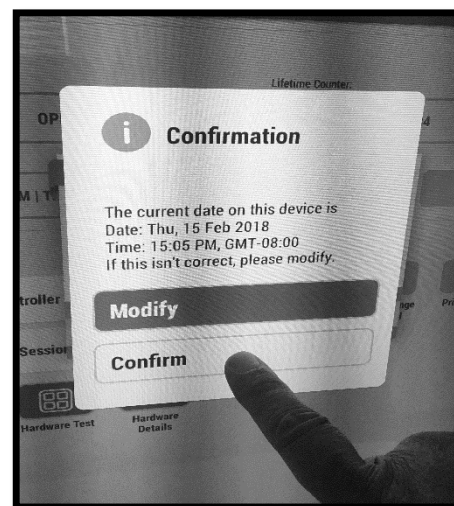
1. Once powered on, insert the Voter Activation Card with the gold chip facing up and toward the device.



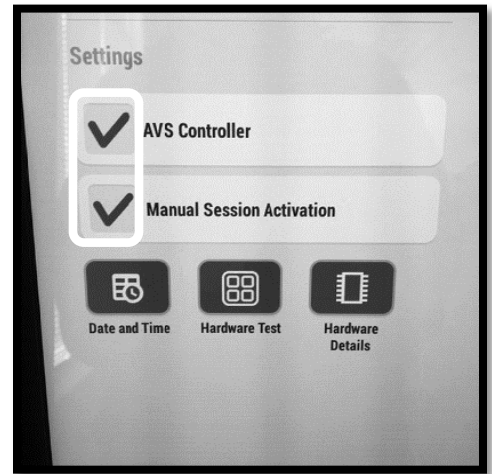
2. Enter the Administrator Login number found in the Red Security Bag. After logging in, a decrypting message will appear, followed by a progress bar. Wait for decrypting to complete (approximately 5 minutes).



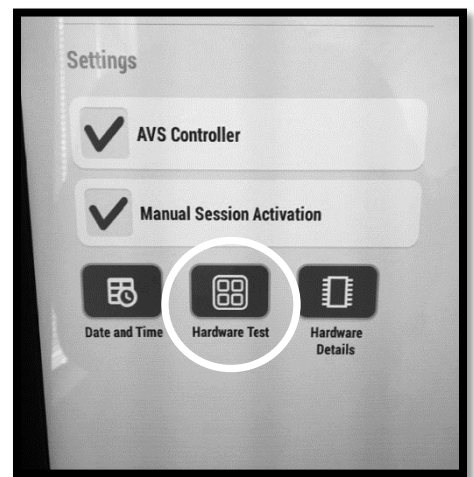
3. Confirm the date and time on screen by selecting the **Confirm** button. If the time is more than five minutes off, make a note of the time. Continue setting up the Ballot Marking Device and call the Command Center when possible.



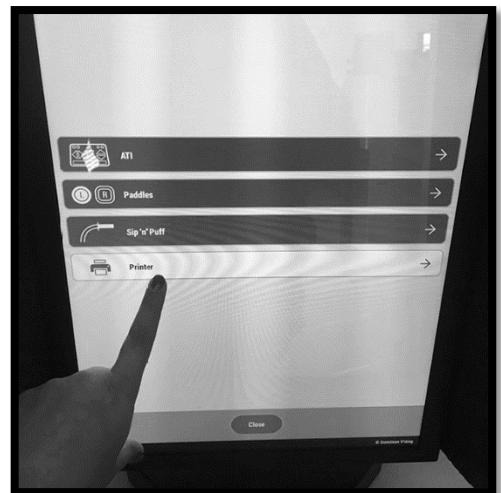
4. Make sure the **AVS Controller** and **Manual Session Activation** boxes are both selected.



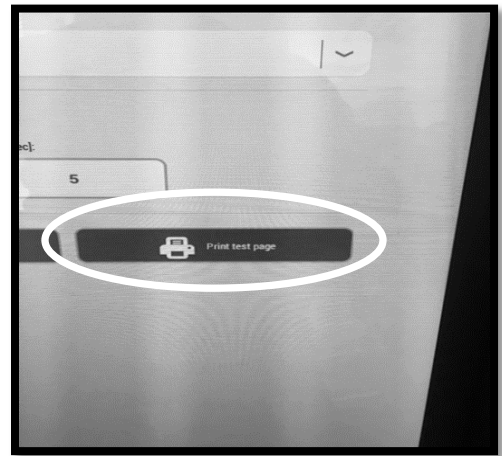
5. Select the **Hardware Test** button.



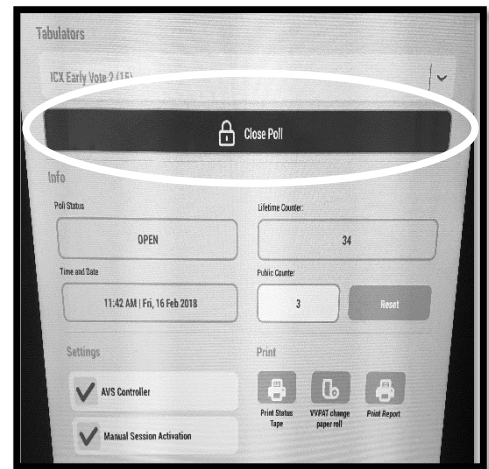
6. Select the **Printer** button.



7. Select **Print test page**. This will prompt the printer to print a test page to verify the printer is connected properly. If a test page does not print, double check the printer's connections to the power supply and the tablet. Place the test page in the Red Security Bag.



8. Press the long bar located near the top of the screen that reads **Open Poll**. Once this is pressed, the bar will change to **Close Poll** which means that the Ballot Marking Device is ready for use.  
*Note: This should be done prior to the 7:00am opening of the polling place.*



9. Remove the Voter Activation Card from the tablet and keep it at the Ballot Issuing Station for use throughout the day.